



October 11, 2011

# 2011 3<sup>rd</sup> Quarter Crime Stats for Rochester, NY

*Chief James M. Sheppard*

# 2011 Part I Crime Successes through Q3:

- Fewest Robberies in 10 Years
- 2<sup>nd</sup> Lowest level of Shooting Victims in 10 years
- 2<sup>nd</sup> Lowest level of Violent Crime in 10 years
- Lowest level of overall Part I crime in 10 years

# Key 2011 Part I Crime Challenges through Q3:

## ■ **Burglary:**

- 2<sup>nd</sup> highest level in 10 years
- Q3 2011 up 13% over Q3 2010
- Q3 2011 up 27.5% over 5 year avg. for Q3

## ■ **Aggravated Assault:**

- 3<sup>rd</sup> highest level in 10 years, but:
  - -6.8% in Q3 compared to Q3 2010. First two quarters of 2011 were up compared to 2010.
  - Shootings down 31.2% from 2010.

Public Safety - Community Engagement - Morale - Teamwork  
- Leadership Development

# 2011 Part I Crime (Jan-Sept. Only)

Crime Type	2011	2010	% Change	5 Yr. Avg	2011 % Change from 5 Yr. Avg.
Murder	21	36	-41.7%	33	-36.4%
Rape	56	75	-25.3%	73	-23.3%
Robbery	519	584	-11.1%	761	-31.8%
Agg. Assault	854	968	-11.8%	861	-0.8%
<b><i>Violent Crime Total</i></b>	<b>1,450</b>	<b>1,663</b>	<b>-12.8%</b>	<b>1,728</b>	<b>-16.1%</b>
Burglary	2,442	2,445	-0.1%	2,054	18.9%
Larceny	5,027	5,633	-10.8%	5,578	-9.9%
MV Theft	540	585	-7.7%	1,096	-50.7%
<b><i>Property Crime Total</i></b>	<b>8,009</b>	<b>8,663</b>	<b>-7.5%</b>	<b>8,727</b>	<b>-8.2%</b>
<b>Total Part I Crime</b>	<b>9,459</b>	<b>10,326</b>	<b>-8.4%</b>	<b>10,455</b>	<b>-9.5%</b>

Public Safety - Community Engagement - Morale - Teamwork - Leadership Development

# Historical Context (Jan-September 2011)

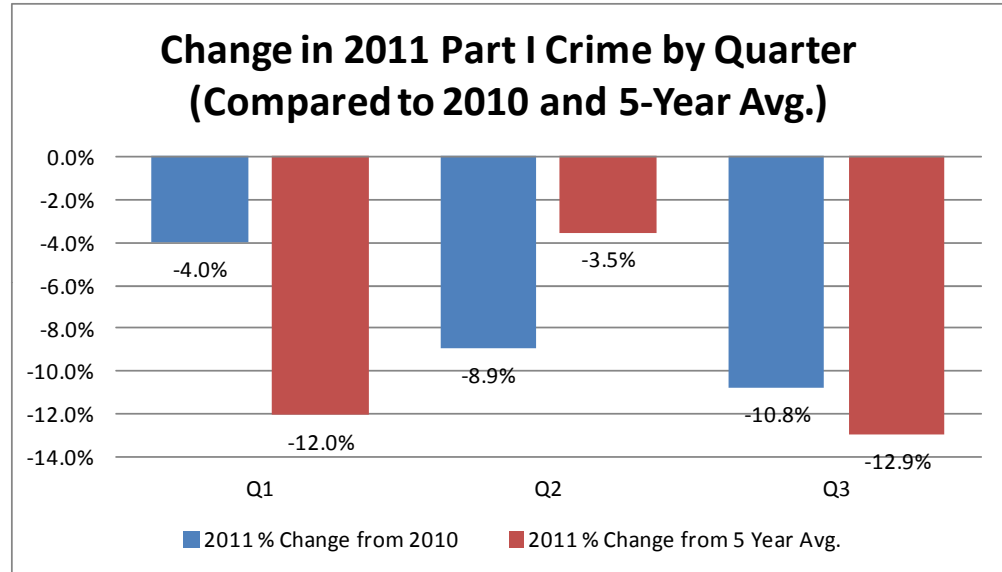
Crime Type	5-Year Rank	10-Year Rank
Murder	2nd Lowest	2nd Lowest
Rape	Lowest	Lowest
Robbery	Lowest	Lowest
Agg. Assault	2nd Highest	3rd Highest
<b>Violent Crime</b>	<b>2nd Lowest</b>	<b>2nd Lowest</b>
Burglary	2nd Highest	2nd Highest
Larceny	Lowest	Lowest
MV Theft	Lowest	Lowest
<b>Property Crime</b>	<b>Lowest</b>	<b>Lowest</b>
<b>Total Part I Crime</b>	<b>Lowest</b>	<b>Lowest</b>

*\*Note: Due to a change in how Aggravated Assaults are reported, Agg. Assault data prior to 2005 are not comparable to Agg. Assault data from 2005 to present. Per a clarification in UCR standards, the state began mandating the reporting of the threat of injury with a weapon (known as "Menacing 2<sup>nd</sup>" in NYS Penal Law) as an Aggravated Assault in 2005. Prior to that, Menacing was listed as a Simple Assault, a Part II crime.*

Public Safety - Community Engagement - Morale - Teamwork - Leadership Development

# Part I Crime

Year	Total Part I Crime
2011	9,460
2010	10,326
2009	9,493
2008	9,905
2007	10,458
2006	12,094
2005	12,265
2004	13,284
2003	13,713
2002	12,705
2001	12,202

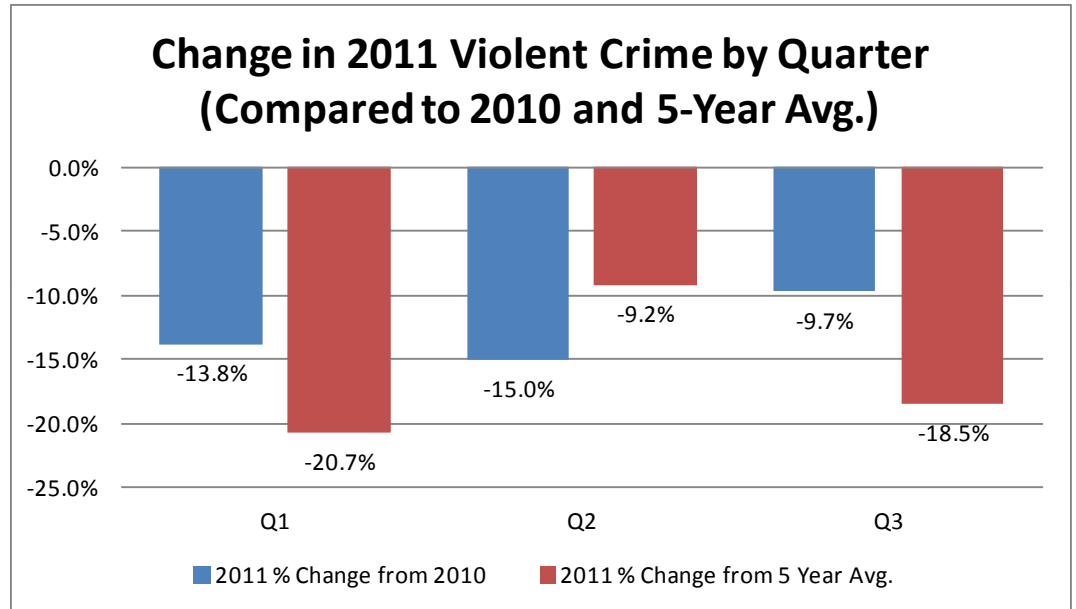


- Best Q3 total in last 5 years
- Lowest Part I Crime YTD total in 10 years
- 2009 was the lowest total in past 25 years.
- Driven by reductions in Robbery, Larceny, & MV Theft

Public Safety - Community Engagement - Morale - Teamwork - Leadership Development

# Violent Crime

Year	Total Violent Crimes
2011	1,451
2010	1,663
2009	1,436
2008	1,702
2007	1,752
2006	2,086
2005	1,738
2004	1,643
2003	1,769
2002	1,514
2001	1,471

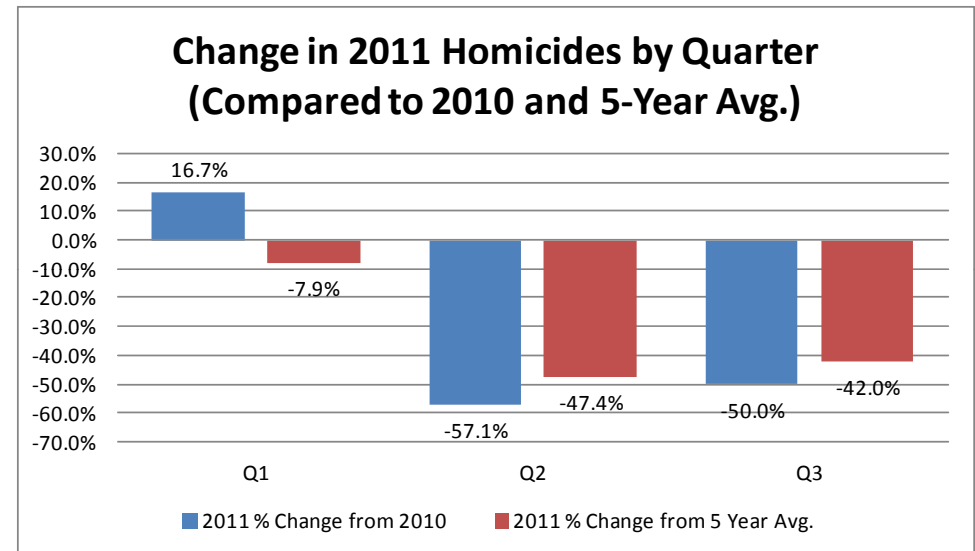


- Best Q3 in 5 years
- 2<sup>nd</sup> best YTD total in 10 years
- Reductions in all categories

Public Safety - Community Engagement - Morale - Teamwork - Leadership Development

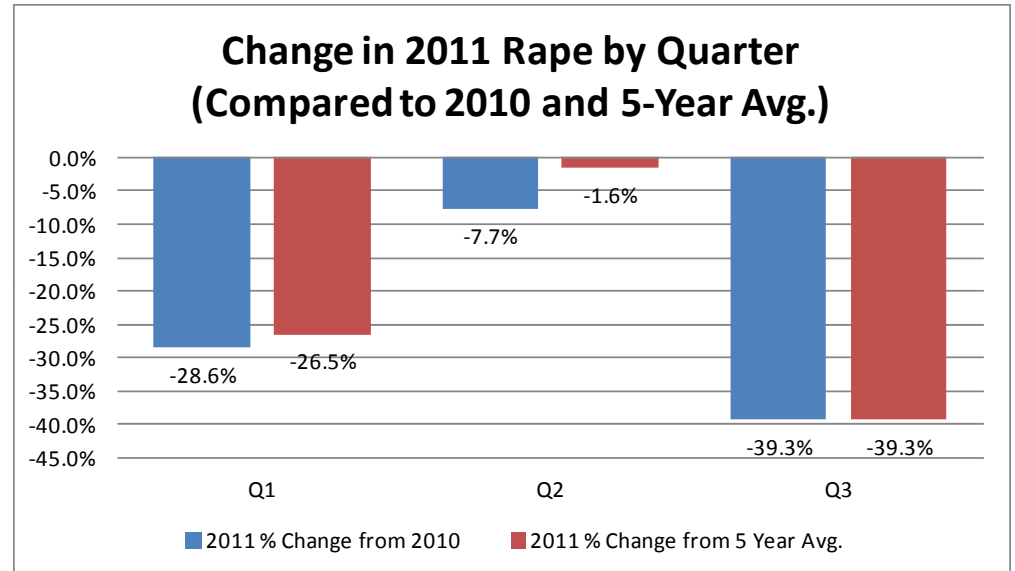
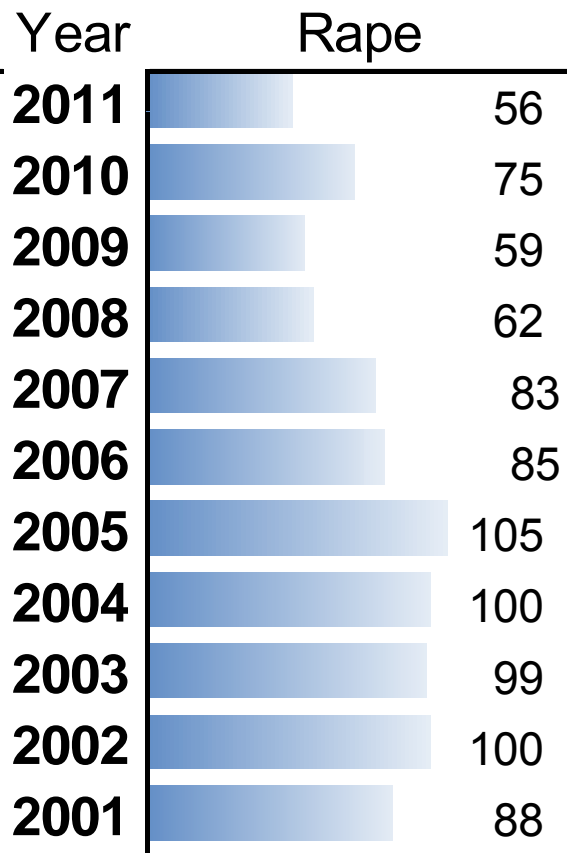
# Murder

Year	Murder
2011	21
2010	36
2009	18
2008	36
2007	38
2006	36
2005	39
2004	32
2003	43
2002	37
2001	34



- 21 Through Q3, 22 through 10/7
- 2<sup>nd</sup> lowest YTD total in 10 years
- 5 Domestic-related homicides YTD

# Rape

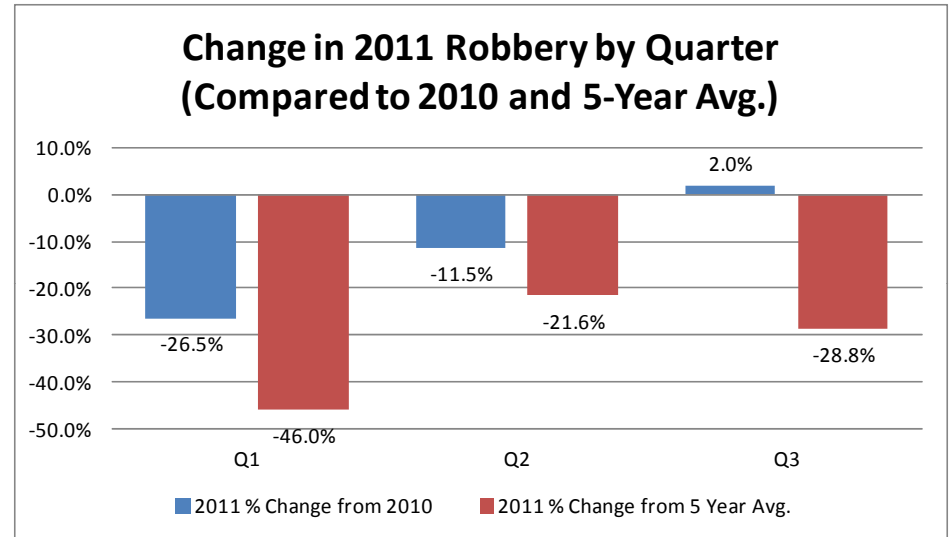


- Lowest total in 10 years YTD
- Lowest Q3 in 5 years

Public Safety - Community Engagement - Morale - Teamwork - Leadership Development

# Robbery

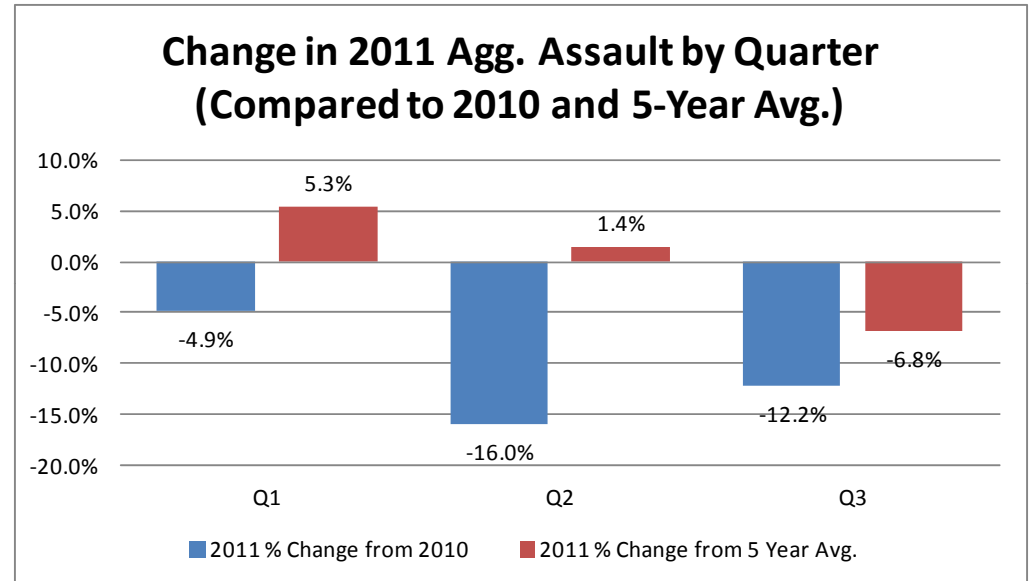
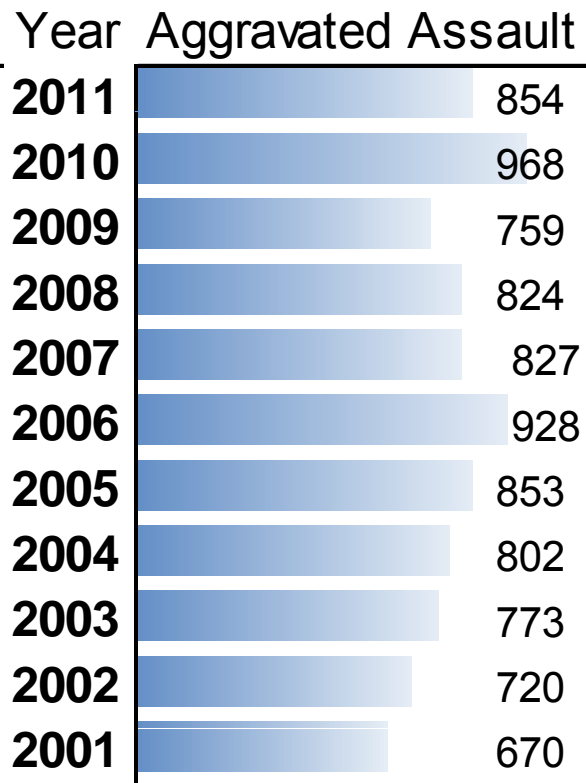
Year	Robbery
2011	519
2010	584
2009	600
2008	780
2007	804
2006	1,037
2005	741
2004	709
2003	854
2002	657
2001	679



- Lowest YTD total in 10 years
  - Declines seen in both divisions
- 2<sup>nd</sup> lowest Q3 in last 5 years, but slightly up against Q3 2010

Public Safety - Community Engagement - Morale - Teamwork - Leadership Development

# Aggravated Assault



- 3<sup>rd</sup> highest total in past 10 years, but:
- 2<sup>nd</sup> lowest Q3 in past 5 years.

# 2011 Shooting Victims (Jan-June)

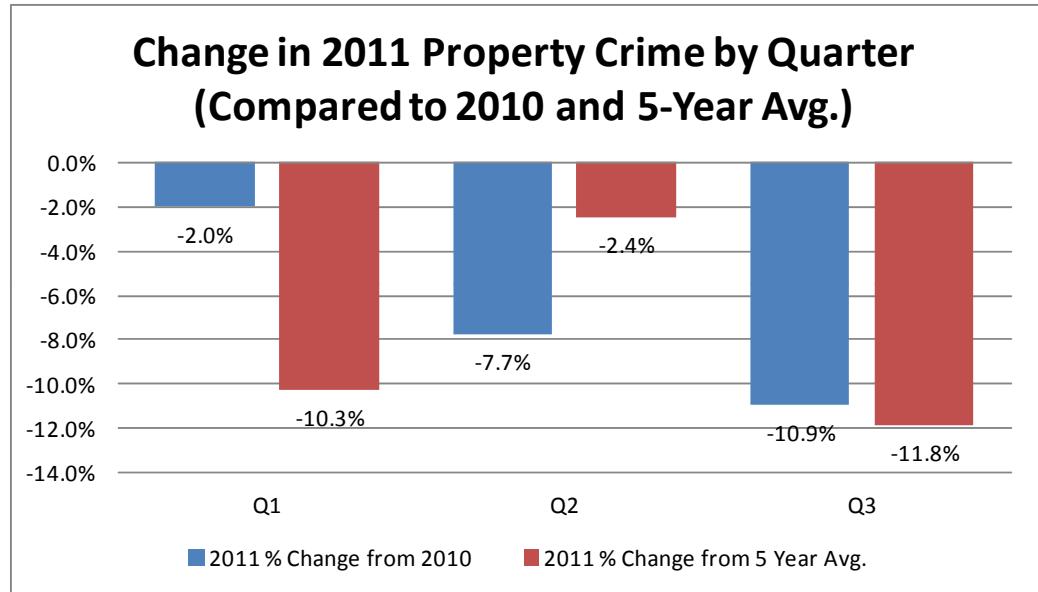
- -31.2% from 2010
- 2<sup>nd</sup> Lowest YTD total in 10 years
- Best Q3 in 10 years
  - -22% from Q3 2010



Public Safety - Community Engagement - Morale - Teamwork - Leadership Development

# Property Crime

Year	Total Property Crimes
2011	8,009
2010	8,663
2009	8,057
2008	8,203
2007	8,706
2006	10,008
2005	10,527
2004	11,641
2003	11,944
2002	11,191
2001	10,731

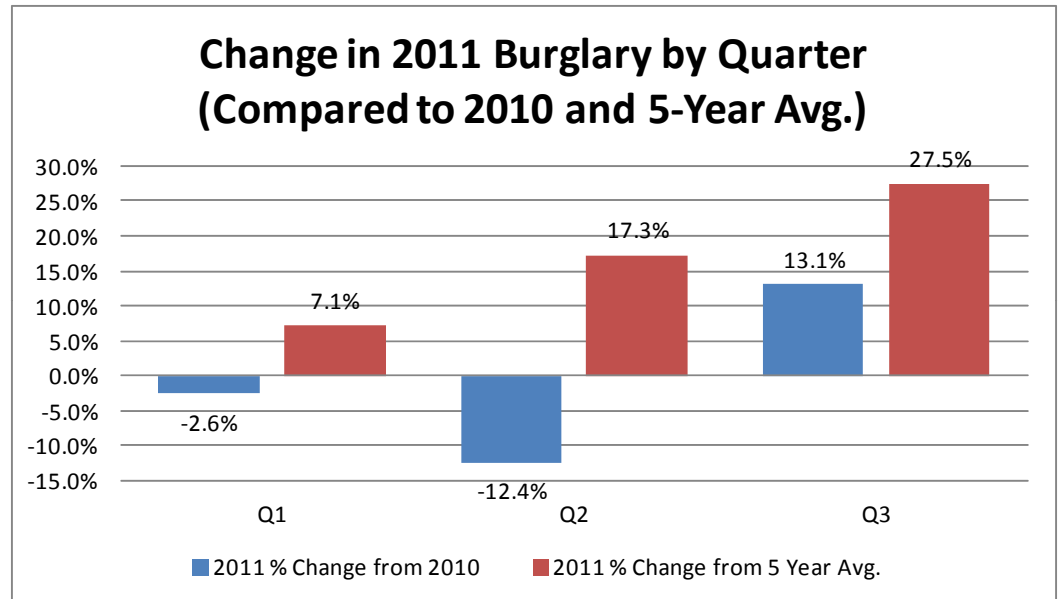


- 2<sup>nd</sup>-best mid-year total in last 10 years
- -7% from 2010 Midyear
- 2009 was the lowest total in past 25 years.
- Driven by decreases in all 3 major property crimes

Public Safety - Community Engagement - Morale - Teamwork - Leadership Development

# Burglary

Year	Burglary
2011	2,442
2010	2,445
2009	1,947
2008	2,079
2007	1,857
2006	1,941
2005	2,079
2004	1,963
2003	1,881
2002	1,789
2001	1,850

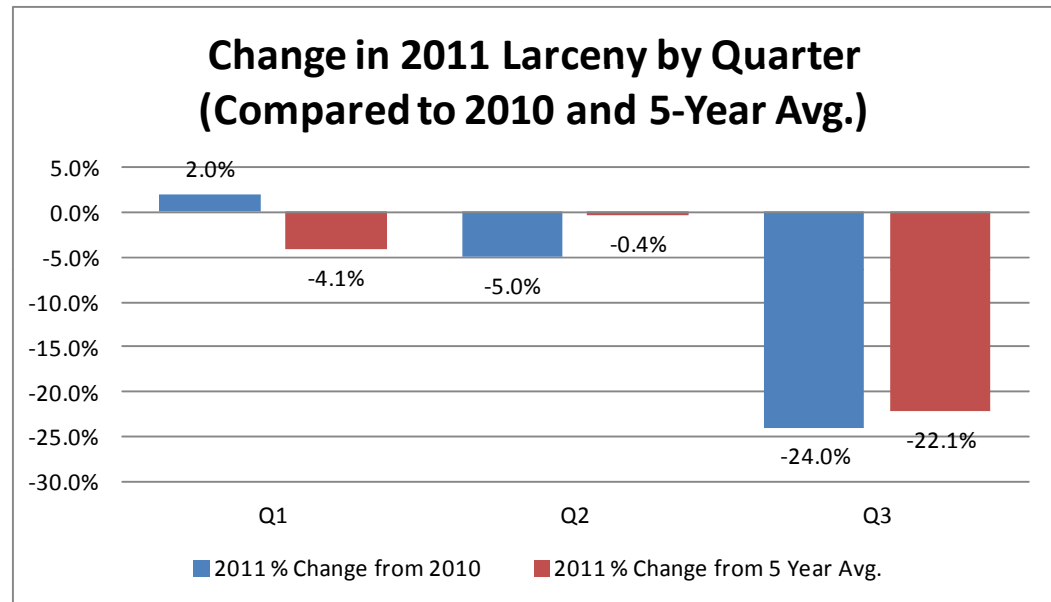


- 2<sup>nd</sup> Highest YTD total in 10 years
- Worst Q3 in 5 years
- Areas of concern:
  - PSA 25 (+19.5% YTD from 2010, +51.2% over 5 year avg.)
  - PSA 47 (+45.9% from 2010, +40.6% over 5 year avg.)
  - PSA 54 (+25.4% from 2010, +65.9% over 5 year avg.)

Public Safety - Community Engagement - Morale - Teamwork - Leadership Development

# Larceny

Year	Larceny
2011	5,027
2010	5,633
2009	5,388
2008	5,170
2007	5,539
2006	6,159
2005	6,811
2004	7,391
2003	7,563
2002	7,531
2001	7,361

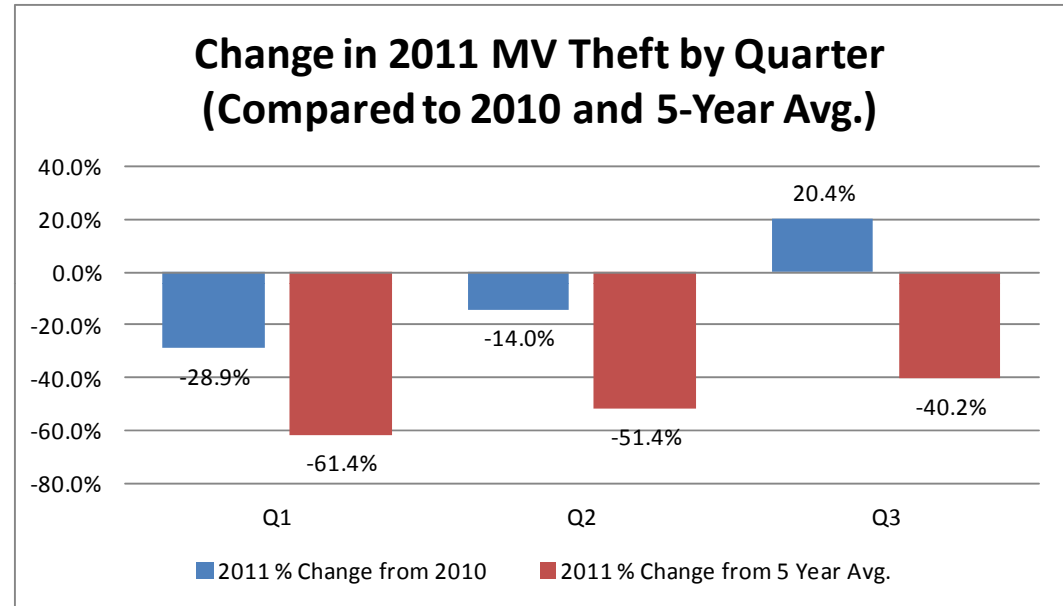


- Lowest YTD total in 10 years
- Lowest Q3 in 10 years
- Led by 29% reduction in Car Break-ins YTD
  - 41% reduction in Q3 compared to 2010- Almost 400 fewer break ins than last year

Public Safety - Community Engagement - Morale - Teamwork - Leadership Development

# Motor Vehicle Theft

Year	Motor vehicle theft
2011	540
2010	585
2009	722
2008	954
2007	1,310
2006	1,908
2005	1,637
2004	2,287
2003	2,500
2002	1,871
2001	1,520



- Lowest YTD total in 10 years
- Observed Q3 increase- up 20% from 2010. Still 2<sup>nd</sup> lowest Q3 in 5 years.
  - Increases observed primarily in Southeast Quadrant- PSAs 30, 31, 32

Public Safety - Community Engagement - Morale - Teamwork - Leadership Development

# Perception vs. Reality

Rochester Part I Crime: 1985-2010

